



MAKE SURE TO CUT POWER BEFORE RELEASING OR LOCKING THE OPERATOR

4.1 BUILT IN HYDRAULIC RELEASE

If the gate has to be moved manually due to a power cut or fault of the automated system, you can use the hydraulic release device with the release key (Fig.17):

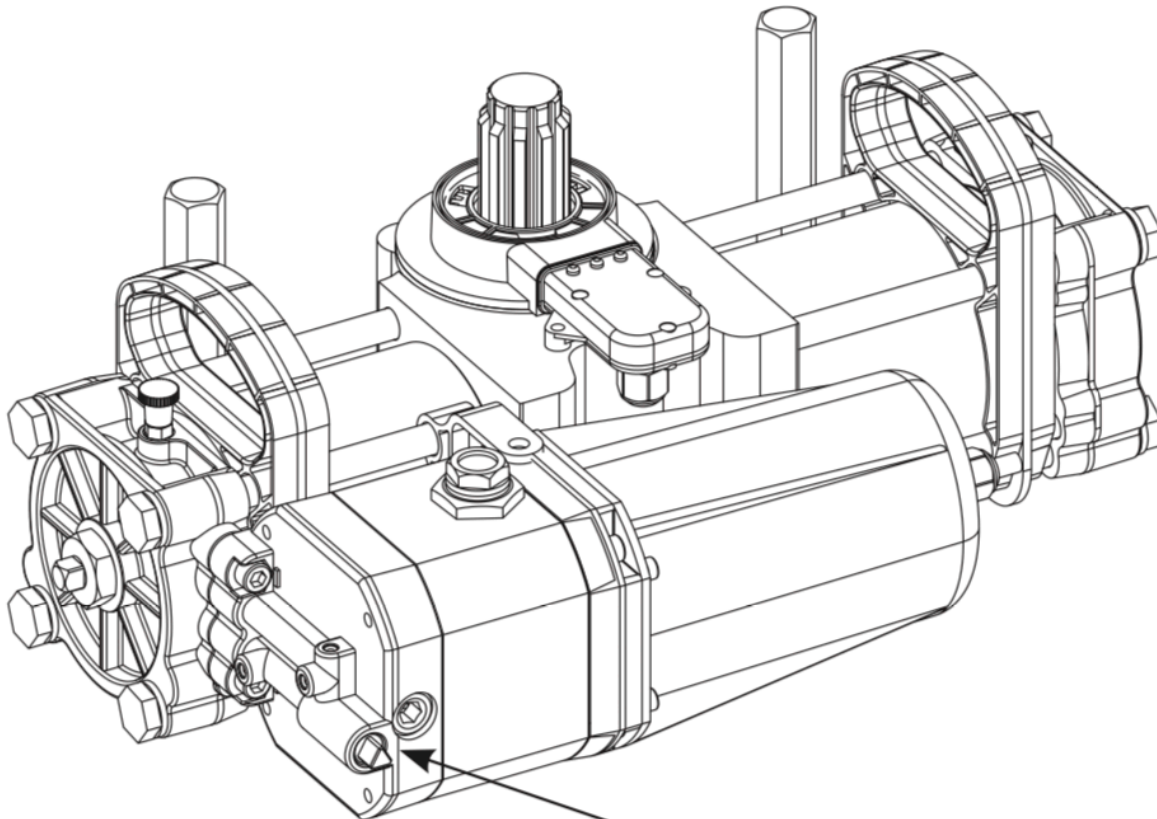
1) Remove the cover from the bearing case.

2) Turn the release screw

- To RELEASE, turn the screw counter-clockwise by one turn.

(DO NOT COMPLETELY UNFASTEN THE SCREW TO AVOID SPILLING THE OIL.

- To re-engage the hydraulic operation, turn the screw clockwise up to the mechanical stop point. (DO NOT OVERTIGHTEN)



RELEASE SCREW

Fig.17